



YWCA GREATER FLINT

ANNUAL REPORT 2018

October 1, 2017—September 30, 2018

eliminating racism
empowering women

ywca

YWCA Greater Flint

is ON A MISSION to

eliminate racism, empower women and
promote peace, justice, freedom and
dignity for all.

Dear Friends,

The 2018 year marked our 110th Anniversary serving the Flint and Genesee County community. We can thank Nina Mills, an assistant to the City of Flint treasurer at the time, for initiating the establishment of the YWCA of Greater Flint in 1908. Much has changed since then, but the core vision of serving the needs of girls and women in our community has not.

Exciting things took place this year including:

- Hiring of a new CEO;
- Completion of a strategic plan
- Implementation of a Sexual Assault Response Team (SART) which will be developing a comprehensive, county-wide response protocol for sexual assault survivors; and,
- Developing a leadership program for middle school girls

We hope you enjoy reading about our initiatives. The YWCA Greater Flint is on a mission! Thank you for supporting us!

Amari Steward

Board President

Michelle Rosynsky, Ed. D.

CEO

BOARD OF DIRECTORS

Amari Steward, President

Elisabeth Saab, VP

Nicole Gubancsik, Treasurer

Kenyatta Bates, Secretary

Meagan Cooke

Kelli Doherty

Kenyetta Dotson

Christina Flint

Saville Gibson

Danielle Green

Marcie Hunter

Barbara Hunyady

Heather Kale

Denise Keipert

Tarnesa Martin

Candice Montie

Maryum Rasool

Anoopa Todd

Qiana Towns

Domestic Violence and Sexual Assault Programs

The YWCA Greater Flint
offers comprehensive
services for victims of
domestic violence and
sexual assault in
Genesee County

918 clients were
provided with civil
legal advocacy

22 survivors
participated in a
support group

1,200 clients
received individual
crisis counseling

YWCA
IS ON A
MISSION

VICTIM SERVICES

CRISIS COUNSELING

Counselors provide tools to empower survivors by increasing their safety and lead lives free from violence. Support groups provide a safe place to learn & grow with others who have gone through similar situations.

We assisted with the completion of **710** personal protection orders

CRISIS LINE

A 24 hour crisis line answered by trained professional staff who provide emergency shelter assessments, safety planning, share community resources and offer referrals to callers in need of supportive services.

24/7 CRISIS LINE: 810-238-SAFE

VICTIM ADVOCACY

Staff provide information about the criminal justice system, provide court support, assist with filing personal protection orders & work with local police jurisdictions who receive domestic violence & sexual assault complaints. Our advocates are also embedded in the Flint Police Department, and the circuit and district courts, working alongside our partners to provide services to victims.

2,082 crisis calls were received

SafeHouse

The SafeHouse is a 32-bed facility that provides safe, temporary shelter and supportive services to survivors of domestic violence and sexual assault and their minor children. SafeHouse is located in a beautiful, comfortable and secure site, with easy access to public transportation and community resources. In addition to emergency housing, clothing and food, services available while at Safe House include:

- ◆ Victim advocacy
- ◆ Crisis counseling and support groups
- ◆ Referrals to community resources
- ◆ Personal advocacy and positive support
- ◆ Children's activities
- ◆ Educational opportunities



221 adult survivors and
218 children were
housed in Safehouse
439 TOTAL





SAFE CENTER
ywca

107 rape kit
exams were
completed

Sexual Assault Forensic Examination Center

In 2017, the YWCA opened the SAFE Center and launched its Sexual Assault Nurse Examiner (SANE) Program. The Center is equipped to perform rape kit examinations for victim in a safe and private setting. SANE nurses are on-call 24/7 to perform a rape kit examination in the SAFE Center.

ERT responded to
98 calls

Domestic violence– 58
Sexual Assault– 40

EMERGENCY RESPONSE TEAM (ERT)

Advocates provide 24 hour crisis intervention to survivors identified in local emergency rooms in in the SAFE Center who have survived a recent incident of domestic violence or sexual assault. Advocates provide emotional support, assist with personal protection orders, and inform the survivor of our services and connect them to community resources.

EDUCATION AND OUTREACH

The YWCA Greater Flint made contact with **5,800** individuals through presentations about the dynamics of intimate partner violence and sexual assault.

We offered presentations and trainings to:

- Law enforcement agencies;
- Court officials;
- Local college students and administrators;
- Local middle school and high school students and teachers; and ,
- Faith-based organizations.

We also participated in community events where we staff a YWCA resource table. Some of the events include:

- Flint Farmer's Market
- Mott Community College Fair
- Take Back at Night at MCC
- Clothesline Project at UM-Flint
- Speed Networking-Food Bank of Eastern Michigan
- Stews, Chilis and Soups Cook-off at General Motors Service Parts Operation
- Hamilton Health Clinic
- Galentine's Day at Flint Local 442



VOLUNTEERS

52 individuals served as volunteers or interns, amassing a total of **7,775** hours of service!



Our interns come from the following institutions:

Baker College

Michigan State University

Mott Community College

Saginaw Valley State University

University of Michigan-Flint

PARTNERS

City of Flint Police Department

Department of Health and Human Services

Genesee County Clerk's Office

Genesee County Jail

Genesee County Prosecuting Attorney's Office

Genesee Intermediate School District

Job Corps

Odyssey Outpatient Services

Project Community Connect (homeless services)

Shelter of Flint

St. Luke's New Life Center

Voices for Children Advocacy Center

Wellness Center

2018 Nina Mills Society

We would like to recognize and thank everyone who donated \$1,000 or more to the YWCA Greater Flint from January 1, 2017 through December 31, 2017.

Eleanor Brownell

Terri Burden

Rick & Dawn Cooper

Judy Ebbott

Kathi Horton

Harriet Kenworthy

Nancy Kleinpell

Wayne Knecht

Barbara Koegel

Kathryn Koegel

Dr. Nita Kulkarni

Audrey Lattie

Linda Lawrence Murphy

Mary Lazar

Bernard & Louise McAra

Elizabeth Neithercut

Gail Odom

Helen Philpott

William Piper

Julianne Princinsky

Laurie Prochazka

EJ Rundles

Ardele Shaltz

Emily Siler

George and Mary Skaff

Sherri Stephens

George & Tiffany Stolzenfeld

Gloria Van Duyne

Patti Higgins

Shannon White

Eleanor Willey

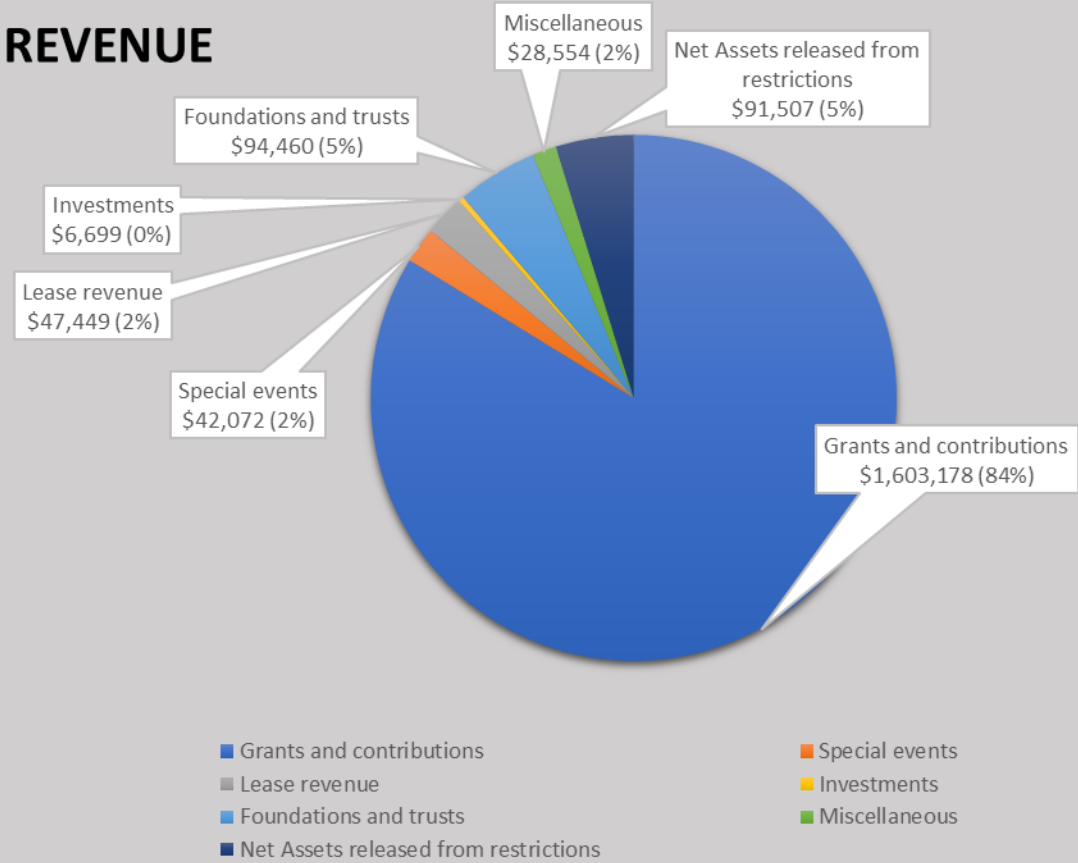
Chris & Elizabeth Wise



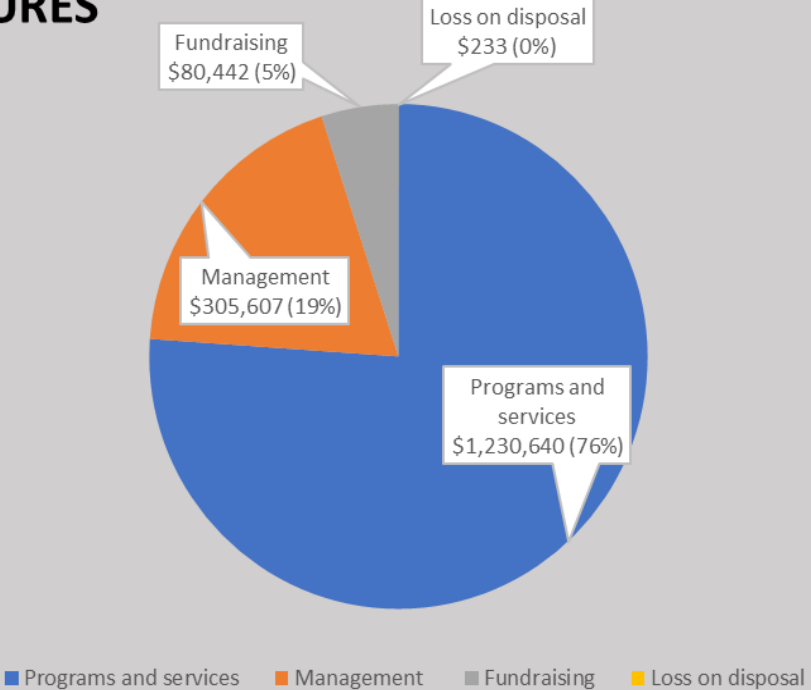
FINANCIALS

October 1, 2017—September 30, 2018

REVENUE



EXPENDITURES



YWCA Greater Flint

801 South Saginaw Street

Flint, MI 48502

810-238-7621

ywcaflint.org

facebook.com/ywcaflint

24/7 Confidential Crisis Line

810-238-SAFE